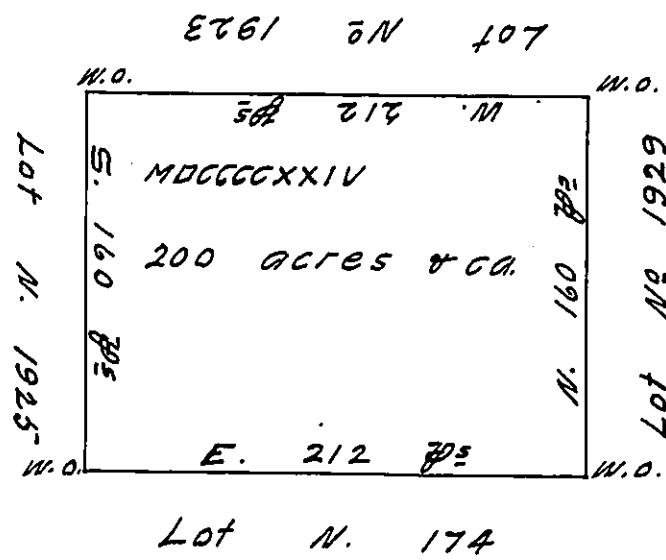


FORM NO 1.

Ludwick Rough
Jany. 7th 1806.

No 1924
Dis 2

Drawn 7th January 1806 by Ludwick Rough, private
situate now in Mercer County.



In pursuance of an Act of the General Assembly of the
state of Pennsylvania, passed the 24th day of February, 1785,
entitled, "An" Act for directing the mode of distributing the
donation lands, "promised the troops by this Common-
wealth;" and by order of the Surveyor General, with
the approbation of the honorable the Executive Coun-
cil, I have surveyed, on the 24th day of June, 1786, the
above described tract of two hundred acres of land, and
allowance for roads, &c. No 1924, situate in district No 2,
on the west side of the Alleghany river, in the county
of Westmoreland.

To John Lukens, Esquire,
Surveyor General.

B. Evans
D. Surveyor

IN TESTIMONY that the above is a copy of the original remaining on file in
the Department of Internal Affairs of Pennsylvania, made
conformably to an Act of Assembly approved the 16th day of
February, 1833, I have hereunto set my Hand and caused
the Seal of said Department to be affixed at Harrisburg,
this sixth day of AUGUST 1908

Henry Howard
Secretary of Internal Affairs.